

Dominique & Christian
welcome you in

LA METAIRIE

On the property La Shertane

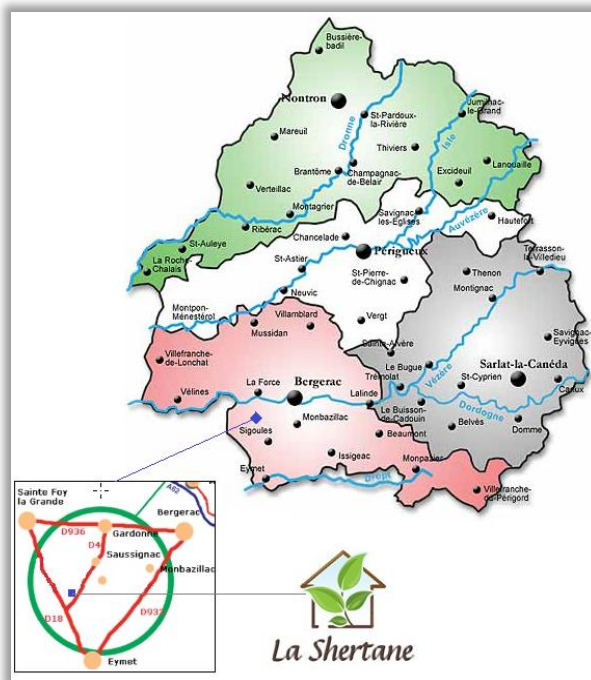


Holiday cottage ***



EN PERIGORD POURPRE

Large house over 200 square meters (four sleeping rooms). Very beautiful view on a pond situated on the property.



HOW TO FIND

In the heart of "Périgord pourpre", between Saint-Emilion and Monbazillac.

By car : At 20 Km of Bergerac or 10 Km of Sainte-Foy-La-Grande (on the D4 between Saussignac and Couture)

By train : Bordeaux (78 km), Libourne (48 km), Sainte Foy (10 km), Bergerac (20 km), Gardonne (7 km).

By plane : Bordeaux (83 km), Bergerac (20 km)

La Shertane

24240 MONESTIER

Tél. 33 (0)5 53 22 79 55

Site web : www.lashertane.com

E-mail : contact@lashertane.com

In the middle of a property of charm about 70 000 square meters, our holiday cottage welcome you.

We are in the countryside but near all commodities (shopping centre Leclerc at 15 mn).



Oustides



Living room (70 M²)



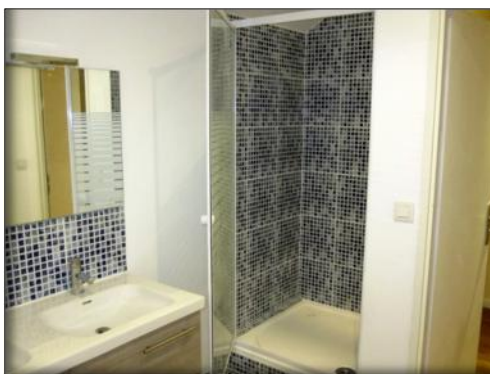
The Kitchen



Large fully equipped kitchen :

- Plate vitro ceramic
- Oven
- microwave oven
- fridge-freezer, Freezer
- Dishwasher
- Coffeepot, Kettle, Toaster ...

Bathrooms



« White » sleeping room



Sleeping room (16 M²) with access to the living room and the garden with a bed of 140x190

« Blue » sleeping room



Sleeping room (18 M²) : 1 bed 1.60 x 1.90, 1 bed 0.90 x 1.90

« Peach » sleeping room



Sleeping room (16 M²) : 2 beds 0,90 x 2.00

«Yellow » sleeping room



Sleeping room (14 M²) : 1 bed 140x190

Gaming room



Activity on the property



Swimming pool (12x6m)



Jacuzzi & Hammam



Fishing pond

Rates

Maximum: 8 guests

Consult our website:
www.lashertane.com/tarifs/

Our prices include :

- Loads and heating
- Internet access
- Access to the swimming pool
- Access to the fishing pond