

Dominique & Christian  
welcome you in

# L'ARMANDINE

*On the property La Shertane*

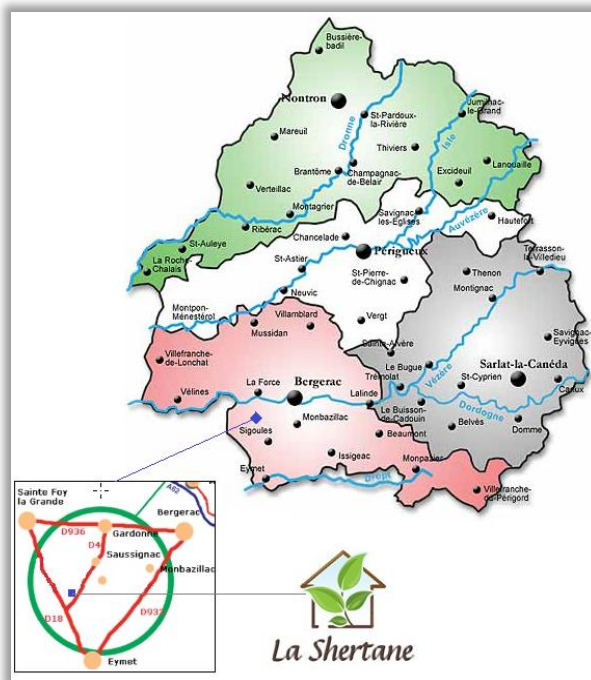


Holiday cottage \*\*\*\*



**IN PERIGORD POURPRE**

*Large apartment over 75 M<sup>2</sup>. Very beautiful view on a pond situated on the property and the surrounding campaign.*



## HOW TO FIND

*In the heart of "Périgord pourpre", between Saint-Emilion and Monbazillac.*

**By car:** At 20 Km of Bergerac or 10 Km of Sainte-Foy-La-Grande (on the D4 between Saussignac and Couture)

**By train:** Bordeaux (78 km), Libourne (48 km), Sainte Foy (10 km), Bergerac (20 km), Gardonne (7 km).

**By plane:** Bordeaux (83 km), Bergerac (20 km)

## La Shertane

24240 MONESTIER

Tél. 33 (0)5 53 22 79 55

Site web : [www.lashertane.com](http://www.lashertane.com)

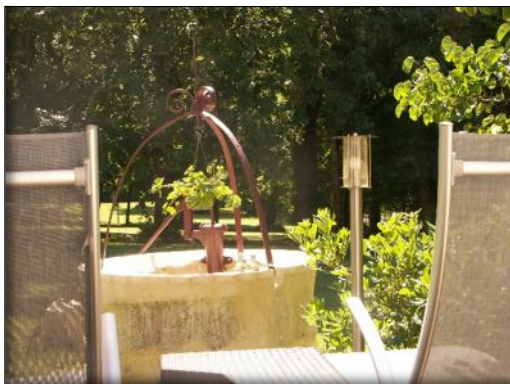
E-mail : [contact@lashertane.com](mailto:contact@lashertane.com)

In the middle of a property of charm about 70 000 square meters, our holiday cottage welcome you.

We are in the countryside but near all commodities (shopping centre Leclerc at 15 mn).



## Oustides



## Living room



## The Kitchen



Fully equipped kitchen :

- Plate vitro ceramic
- Oven
- microwave oven
- Fridge Freezer
- Dishwasher
- Coffeepot, Kettle, Toaster ...

## Bathroom



## Sleeping room



Sleeping room over 19 M<sup>2</sup>

## Activities on the property

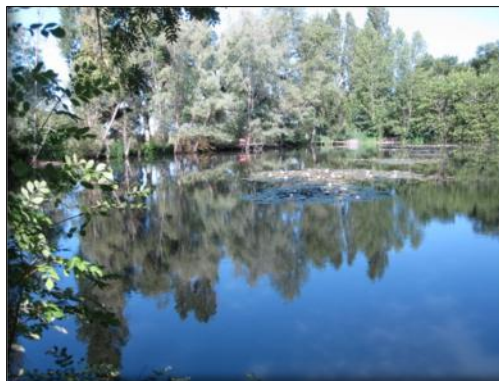
### Swimming pool (12x6m)



### Space with Jacuzzi and Hammam



### Fishing pond



### Rates

Maximum: 2 guests

Consult our website:  
[www.lashertane.com/tarifs/](http://www.lashertane.com/tarifs/)

#### Our prices include :

- Loads and heating
- Wi-Fi access
- Access to the swimming pool
- Access to the fishing pond